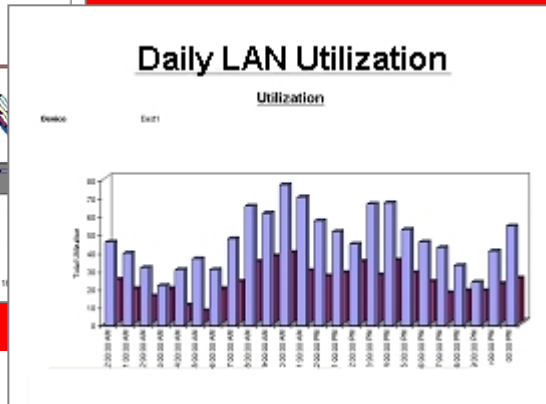
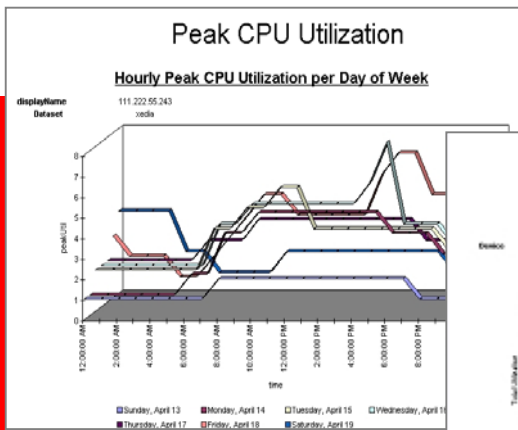


VitalSuite® Advanced Reporting Tool



VitalSuite® Advanced Reporting software, a wizard-based advanced report generation system, offers the ultimate in report flexibility

VitalSuite® Advanced Reporting Tool helps you simplify your network performance management and increase productivity

VitalSuite® Advanced Reporting software is a comprehensive Web-based tool that enables you to generate custom presentation-quality reports and graphs by extracting monitored data from your VitalSuite® Network Performance Management software. With VitalSuite® reporting software, administrators no longer need to export files to complex and expensive commercial reporting packages. The flexible formatting power of the software lets you easily transform network performance data to dynamic, custom reports and quickly determine the status of your network infrastructure. It optimizes the report capabilities of your VitalSuite® Network Performance Management software to increase network resource efficiency and staff productivity.

VitalSuite® Network Performance Management software, the market-leading management tool, provides on-demand access to critical network performance information necessary to pre-empt problems, optimize resources and plan for maximum return on your network investment (ROI). The advanced reporting software works with your VitalSuite® system to provide the centralized reporting capabilities you need to achieve end-to-end visibility—clearly and rapidly—into your geographically dispersed, multi-vendor infrastructure.

Features

- **Fully integrated reporting tool** - provides access to all VitalSuite® Network Performance Management software data sets, calculations, domain and group definitions; automatically discovers new collector data added
- **Powerful custom reporting tool** - supports a wide variety of chart types with robust cataloging, viewing, exporting and scheduling options
- **100% web based report administration package** – provides reports that can be private or published across your organization
- **Multi-platform support** - supports both Microsoft Windows® and Sun® Solaris® operating systems
- **Easy to use** – Out-of-the-box functionality via a wizard-based structure and step-by-step operating procedures

Benefits

- Increases staff productivity by shortening analysis time, allowing staff to focus on other value added activities
- Optimizes and consolidates network resources with no additional IT overhead
- Facilitates informed, performance-based network investment decisions
- Helps to proactively prevent service problems; improves customer satisfaction
- Helps verify service quality and capacity utilization at a glance

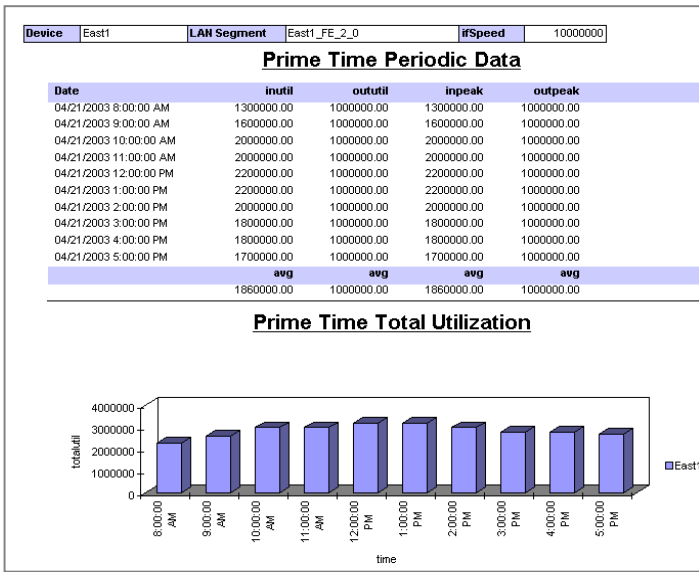


VitalSuite® Advanced Reporting Tool Operations and Specifications

VitalSuite® Advanced Reporting software supports a wide variety of chart types and reporting options to graphically depict only the actionable data you need. Use the software to optimize resources, proactively pre-empt service problems, perform a trend analysis and make informed network investment decisions.

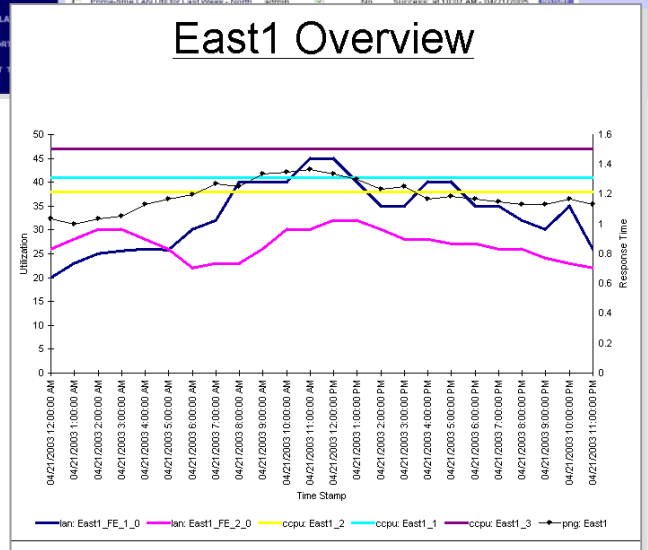
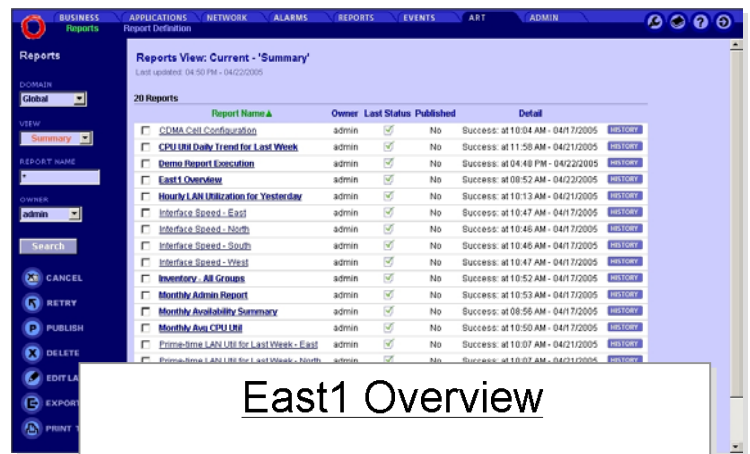
Ease of Use

- Automatically determines VitalSuite® Network Performance Management software datasets and schema
- Incorporates VitalSuite® Performance Management Software system domains, groups and user permissions
- Simplifies reporting across VitalSuite® software's distributed architecture
- Presents single view of periodic and configuration information
- Enables selection of periodic data aggregation level at report execution – no need to duplicate reports for hourly/daily/weekly/monthly data
- Allows definition of hierarchical reports by determining relationships between datasets
- Supports Unicode 3.0



Example of a section in table format with two subsections – one graph and one chart

The unique flexibility of the VitalSuite® software allows you the freedom to choose your own metrics, custom counts, report designs, report type and report outputs, providing a truly versatile, easy to use and customized presentation system for performance data. Access to the detailed information can allow users to analyze the data and determine the root cause of network performance problems at a glance. Regression analysis provides a trend of what has happened and then based on this data makes a fair approximation of what can be expected in the future. The software includes percentile reporting and the capability to plot multiple resources on a single graph. It provides the flexibility of defining reports your way with your corporate logo, data, format and timing information.



Easily author, manage and control reports

VitalSuite® Advanced Reporting Tool Operations and Specifications

Report Flexibility

- Each section can contain tables, graphs, cross-tab or a combination
- Supports a variety of tabular formats, plus bar, area, pie and line chart types
- Users can:
 - Add, edit, copy, delete and reorder sections
 - Add sub-sections within sections
 - Name the section
 - Pick the format (Tabular, Chart)
 - Pick the data set
 - Select fields to use within the report
 - Define their own fields
 - Override displayed field names and width of any field
 - Display aggregated data using functions: average, minimum, maximum, first, last, total and count
 - Preview selections
- Users can specify:
 - Up to 10 field groupings
 - Ascending / Descending options
 - Report output on "Top N Records"
 - Page break handling
 - Sorting - up to 10 fields
 - Custom fields and display order of the fields
 - Filters for report output
 - Report categories
 - SQL supported expressions
 - Report titles – free text and run time values
 - Customized chart fonts for
 - X and Y-axis values/labels – separate for each
 - Legend labels and Chart Title
 - Text displays to add notes
 - Conditional styles based on a value to highlight a datapoint - font, font size, foreground and background color can be controlled
 - "Hidden" fields – fields used in generating the report that are not displayed
 - Special functions - max/min/avg, count, percentile
 - Constraints on the data that is to be included in the report - up to 2 constraints per field - And/Or - custom
 - A logo - tailor font styles and colors
 - Page orientation and page size
- Graphs definitions allow you to specify:
 - The value for the X-axis
 - The value for each Y-axis
 - The value for the Series
 - Auto, manual or matching of left and right Y axes scales
 - Chart size and side-by-side chart placement
 - Multiple series – up to six - to plot against the Y axis

Scheduled Report Capabilities

- Daily, weekly, monthly
- Every "x" days, weeks, months
- Based on the day of week
- Selectable time of day to run reports
- Optional schedule end date
- Email delivery

Data Sources

- VitalSuite® Advanced Reporting Tool allows reports on all of the raw performance statistics that are collected and calculated by VitalSuite® Network Performance Management software
 - Some examples include: Any collector currently available in VitalSuite® Network Performance Management software, LAN / WAN counts, MPLS and QoS data, 95th percentile utilization data, Router measurements, etc
 - Normalized CDR call performance statistics for VoIP
- Includes data defined via MIBWorks or DataWorks
- Automatically identifies new datasets added to VitalSuite® Network Performance Management software and makes the data assessable to the user community
- Supports Coordinated Universal Time (UTC) values and formats as a date and/or time string

Report Administration

- Catalogs existing reports and provides history, copy, publish, export and print functions
- Allows a variety of viewing/exporting options including PDF, XLS (Excel), RTF, XML and HTML
- Reports page allows users to manage and/or run existing reports
 - Summary view shows the report name, owner, last status and detail, access to history
 - "Count" view shows status details; how many instances of the report are scheduled, pending, running, success, failure, cancelled
- Reports are organized based on VitalSuite® Network Performance Management software domain definitions and are private unless published to others in the domain
- Allows "View Only" permissions
- Customizable display format without re-running the report
- Search based on report name, definition name, category, or owner
- Report definitions import/export function

Client/Administrator Interface Requirements

- IE 6.0 or Netscape® 7.1
- Video resolution 1024 x 768
- Acrobat Reader 4.0/5.0 with browser plug-in

System Requirements

- **Windows® 2000/2003**
 - Two 1.5 GHz processors (or better), 2 GB RAM and 150 GB free disk space, CD-ROM Drive, Windows® 2000/2003, SQL 2000 Database
- **Sun® Solaris®**
 - Two 900 MHz processors, 2 GB RAM and 75 GB Free storage on hard disk, 2 Ethernet 10/100 ports, Solaris 8.0, pre-installed, and Oracle® Database Server EE v.8.1.7.3.

VitalSuite® Performance Management Software Portfolio

Lucent Technologies, a proven global provider of multi-vendor, multi-technology software, provides market leading integrated OSS management solutions that deliver today's complex IMS services. Lucent's award-winning VitalSuite® Network and Service Management portfolio is used today by more than 200 fixed, mobile and broadband customers world-wide.

Lucent leverages innovations from Bell Labs and experience and expertise from Lucent Worldwide Services to provide highly flexible, scalable solutions that enable converged services, enhance the user experience and accelerate time to revenue. Lucent partners with world-class system integrators, complementary ISVs and hardware vendors to deliver end-to-end solutions that reduce operational complexities, ease integration costs and maximize profitability.

VitalSuite® Network Performance Management software provides the critical network information necessary to preempt problems, optimize resources and plan for maximum return on network investments (ROI). It provides end-to-end, web-based visibility into geographically dispersed, multi-vendor, multi-technology converged infrastructure. It enables IT managers to monitor, analyze, manage and predict performance from a single centralized location.

To learn more about these and other management solutions, contact your Lucent Technologies sales representative, authorized reseller or sales agent. You can also visit our web site at <http://www.lucent.com/vital> or call 1-888-426-2252.

This document is provided for planning purposes only, and does not create, modify or supplement any warranties which may be made by Lucent Technologies relating to the products and/or services described herein. The publication of information contained in this document does not imply freedom from patent or other protective rights of Lucent Technologies or third parties.

VitalSuite is registered trademark of Lucent Technologies Inc. All other brand and product names are trademarks or registered trademarks of their respective holders.

Copyright © 2005 Lucent Technologies Inc. All rights reserved
VART/DS.1 06/05 – 9.4

